

ONE INCH ROUND

(\$%& 'G9`8 j] jg]cb`GH`DcfhUbXZCF` - +8\$& i`f) \$' L& ' !, \$\$' i`j]bZ:4 cbY]bW fci bX'Vt'a`

How To Use Our Photoshop Template

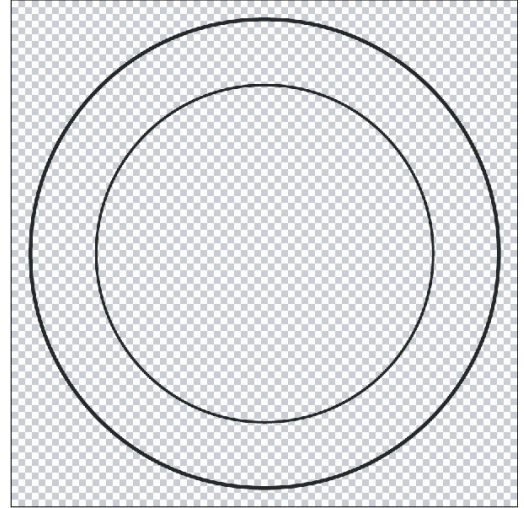
Template Basics:

Image Area - This is the inside circle of the template. Anything inside this circle will print on the face of your buttons.

Bleed / Wrap Around Area - The area between the inside and outside circles is the “bleed” area which will wrap around the side edges of your button. Artwork containing solid colors or patterns other than white should extend to the edge of this outside circle.

For more on this click on the example in the *Importance of Bleed* section of the **Art Guidelines** page on One Inch Round.com

<http://www.oneinchround.com/artwork>



Using the Layers Palette:

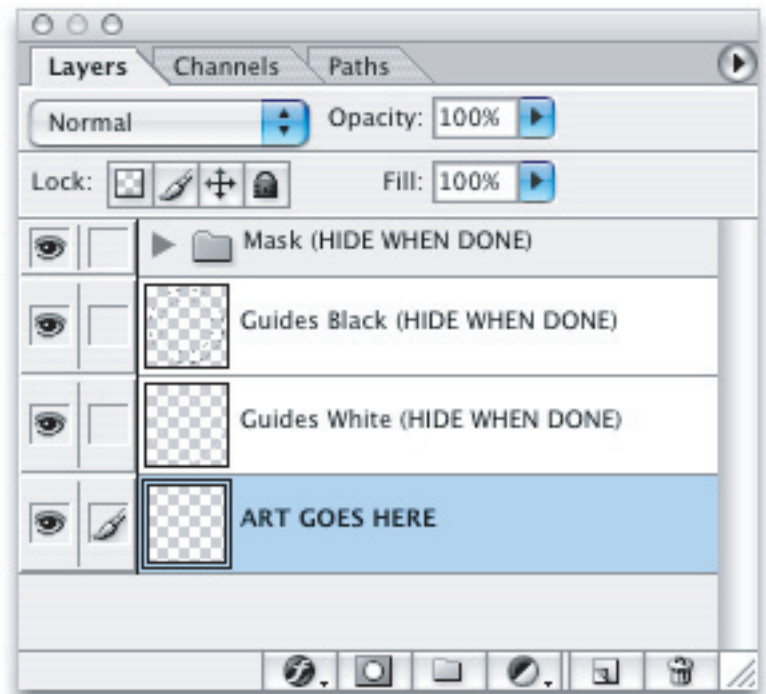
There are 4 layers in the One Inch Round templates to help you crop and size your designs properly so your buttons come out the way you intended. For those of you not familiar with using Layers in Photoshop you can use the “Eyeball” icon to turn the visibility of the Layer’s contents off and on. If you do not see the Layers menu on your screen hit the “**F7**” key, or go to the “**Window**” menu and check on “**Layers**”.

Mask - This layer provides a white mask over your art when the eyeball is checked on so you can see what will show on the live “image area” of your finished buttons

Guides Black (Hide When Done) - The inside ring is the “image area” and is what will appear on the face of your buttons. The outside ring is the “bleed” area which is what will wrap around the sides of your buttons. **IMPORTANT!** These guides will print if you don’t turn them off!!

Guides White (Hide When Done) - These guides are a duplicate of the Black guides and are there to make it easier to work on designs with darker backgrounds.

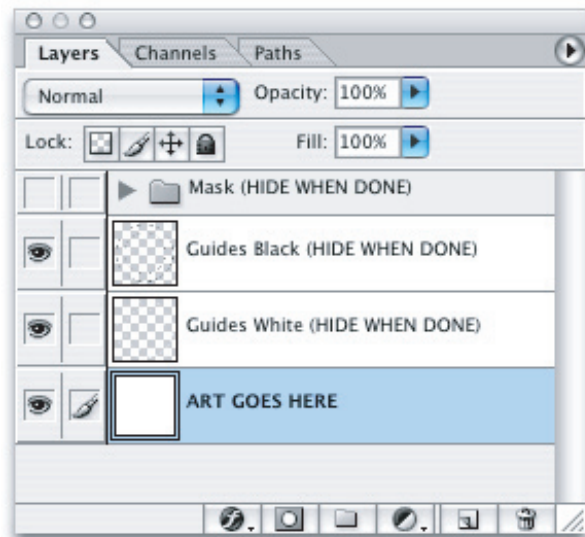
ART GOES HERE - Design and place your artwork on this layer. You may add additional layers as needed.



Step 1. Create Your Artwork.

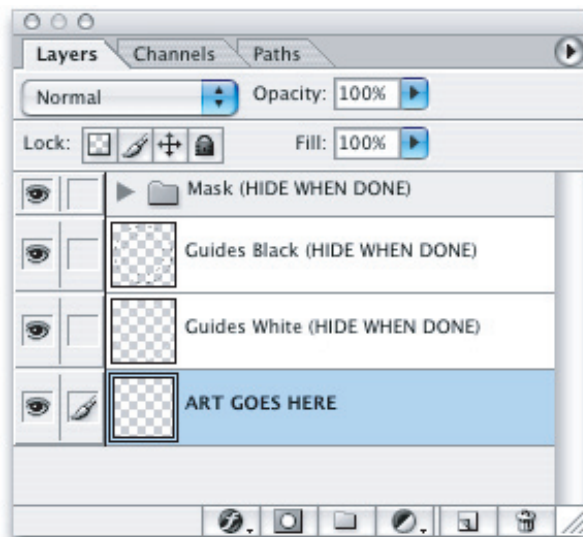
When you create or place your design on the layer named **ART GOES HERE** your file should look something like this. Notice how the background color we have chosen “bleeds” or extends to the edge of the outside circle. Setting your file up this way will make it so your art will wrap neatly around the edges of the buttons.

IMPORTANT: Do not paste pixel images with a resolution lower than 300dpi in your template! Once the resolution of a pixel image has been set it can not be increased or enhanced. When you increase the scale of a low resolution image it will magnify the poor quality of the image resulting in a blurry or “fuzzy” looking print.



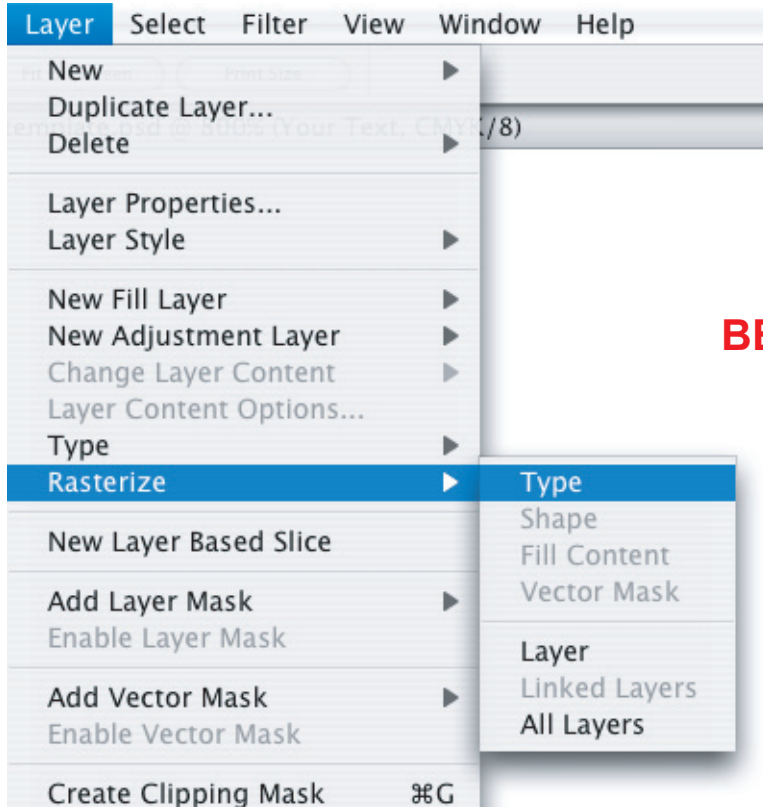
Step 2. Check Your Cropping.

By clicking the eyeball icon to turn ON the **Mask** Layer you can see what will appear on the face of your finished buttons. Be sure your design is well centered.

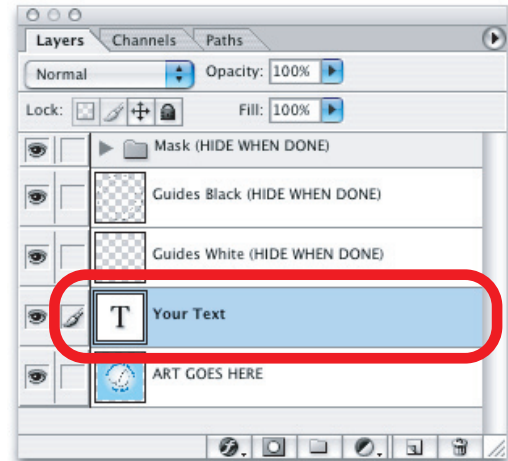


Step 3 Rasterize Your Text.

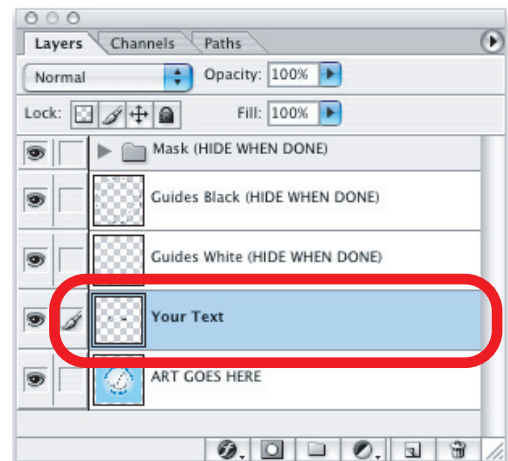
If your file contains additional layers with type you'll need to Rasterize the text or convert them to shapes. From the "Layer" menu at the top of your screen, choose Rasterize > Tas shown below. You will know you've done this right when the Thumbnail in the Layer Menu changes from a "T" to a small thumbnail of your text shapes.



BEFORE



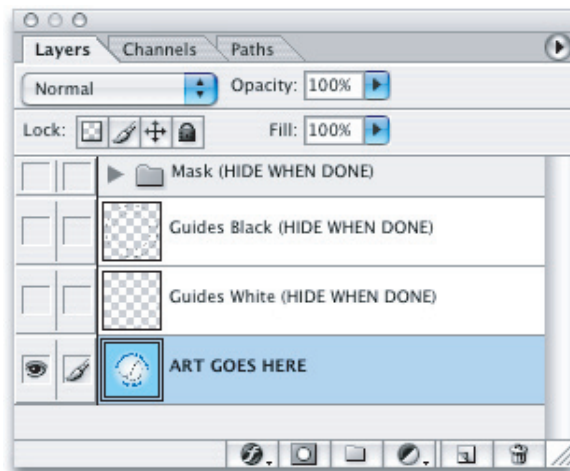
AFTER



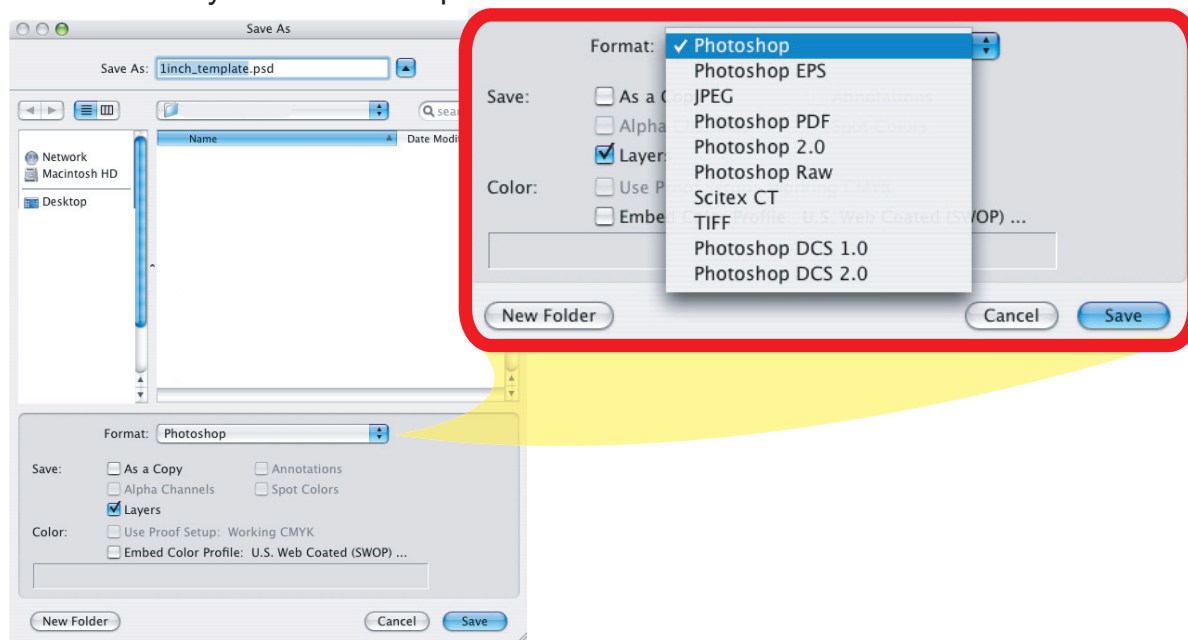
Helpful Tip: To save yourself any headaches, it's a good idea to save a copy of your work at this point while all your text is still type. That way if you find any typo's or need to change the size of your text you will be able go back and correct it without effecting the resolution. Once you use the "Rasterize Type" command your type can no longer be edited with the Type Tool.

Step 4 Saving your file.

At this point your text is Rasterized, you've checked your cropping, and you're ready to save. Turn off all the layers except the **ART GOES HERE** layer and any other layer containing artwork that you've added to the file.



Save your file as a Photoshop Document (.PSD file) with the Layers in tact. Do not “Flatten” your image and please don't name your file “Button.psd”.



You're finished! Submit your artwork.

Now that you have a properly prepared file(s), Follow the instructions in your Order Confirmation Summary to submit your artwork. Thank you for taking the time to prepare your artwork properly!

For help or questions about submitting your artwork beyond the scope of this PDF call 5CH-11-CH during our normal business hours.

One Inch Round Inc. | M-F 9am - 5pm